

SUMMIT PLACE OF SOUTHPARK

FIVESTAR  SENIOR LIVING™



Five Reasons you should **SELECT SUMMIT PLACE!**



1. Care

- 24/7 Care provided by RN's, LPN's , Certified Nursing Assistants and Medication Technicians.
- Experienced staff members, many with more than 20 years of experience.
- Designated staff per floor - same faces everyday caring for your loved one.
- In-house Physical, Occupational and Speech Therapy by our licensed therapists.

2. Dining

- All-Day Dining! - Residents can receive a fresh, hot meal any time of the day.
- All of our meals are prepared fresh each day with a variety options.
- Separate, private dining room for intimate engagements and celebrations.
- Our wait staff are trained by our Expert Chef that has more than 22 years of experience.

3. Peace of Mind

- All inclusive services, including water, power, housekeeping, laundry, and wi-fi access.
- Emergency pull cords in each room and bathroom. Pendants are also available for residents.
- Simple "two-wing" layout for less confusion, NOT a "squared" layout with several hallways.
- On-site maintenance staff readily available day and night for service.
- 12 Ft. wide, bright hallways for easy navigation with walkers, wheelchairs or power scooters.
- A variety of options! - 8 different floor plans ranging from 288 to 800 square foot.

4. Location

- 10 minutes from Uptown Charlotte & 15 minutes from the International Airport.
- Easy access to I-85, I-77, and Highway 74.
- Walking distance to SouthPark Mall and popular SouthPark restaurants.
- Spacious landscape with ample parking, including covered pick-up and drop-off areas.

5. Socialization

- We offer something for everyone, a variety of activities 7 days a week.
- Bridge Club, Community Ambassadors, Crochet and Sewing Clubs.
- Church Services performed at the community with visiting Priests and Pastors.
- Free transportation to scheduled appointments.
- On-site Beauty and Nail Salon.



**SUMMIT PLACE
OF SOUTHPARK**

FIVE STAR SENIOR LIVING™

SummitPlaceofSouthPark.com

704.525.5508

ASSISTED LIVING

For those who need assistance with the activities of daily living, such as eating, bathing, dressing, laundry, housekeeping and medication management, we offer an Assisted Living program that is focused on whatever level of care you require. In our beautiful and comfortable setting, residents get the assistance they need when they need it by a care plan that is tailored to meet one's ever-changing needs.

Apartment Features

- Wall-to-wall carpeting
- Phone outlets
- Window treatment/blinds
- Spacious closets
- Walk-in showers
- Individually controlled heat/air

Services and Amenities

- Three nutritious meals daily, served restaurant-style, plus snacks
- Weekly housekeeping including linen and laundry service
- Active social, recreational and educational programs
- Daily resident safety checks
- Assistance with tasks of daily living, such as bathing, dressing and medication monitoring
- Scheduled local transportation available
- Personal pendant services

- Around-the-clock emergency call response system
- Regular health and wellness assessments
- All utilities except phone and cable included
- On-site nursing supervision
- On-site rehabilitation including Physical, Occupational and Speech Therapies
- Interior and exterior maintenance
- Pets welcome
- Spacious, elegant dining room
- Wellness center
- Weekly scheduled outings, such as: restaurants, movies and shopping trips

Medical Services*

- On-site visits with physician
- On-site podiatry service
- Psychotherapy services
- X-ray services
- Medical lab services
- In-house pharmacy access
- RN/LPN coverage

**Additional fees apply.*

SUMMIT PLACE OF SOUTHPARK

FIVE STAR SENIOR LIVING™

2101 Runnymede Lane | Charlotte, NC 28209 | 704-525-5508 | www.SummitPlaceOfSouthPark.com

©2012 Five Star Quality Care, Inc.



ASSISTED LIVING RATE SHEET

Model	Sq. Ft.	Monthly Rate
Studio	288 Sq. Ft.	<i>Starting at \$2,850</i>
Deluxe Studio	350 Sq. Ft.	<i>Starting at \$3,250</i>
Deluxe Studio with Kitchenette	350 Sq.Ft.	<i>Starting at \$3,450</i>
One Bedroom	488 Sq. Ft	<i>Starting at \$4,050</i>

Beyond our standard services and amenities, we offer an all-inclusive rate covering all levels of care. This includes assistance with medication, bathing, transfers, dressing, personal hygiene, laundry, housekeeping services, reminders, toileting and more.

Levels of Care

Level I	\$350	Level III	\$1,050
Level II	\$700	Level IV	\$1,400

Medication Management

Level I	\$250
Level II	\$350

Community Fee: A non-refundable fee of \$2,000 is due upon reserving your apartment of choice.

Second Occupant Fee: \$1,000 per month

Respite Stay: \$150 per day

Rates are subject to change.

SUMMIT PLACE OF SOUTHPARK

FIVE STAR SENIOR LIVING™

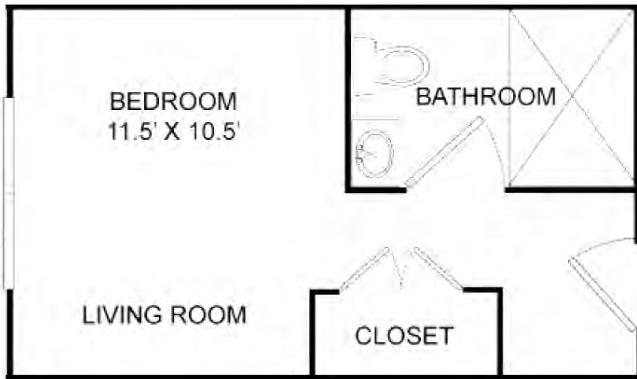
2101 Runnymede Lane | Charlotte, NC 28209 | 704-525-5508 | www.SummitPlaceOfSouthPark.com

©2012 Five Star Quality Care, Inc.



ASSISTED LIVING FLOOR PLANS

STUDIO



ONE BED, ONE BATH

288 Square Feet

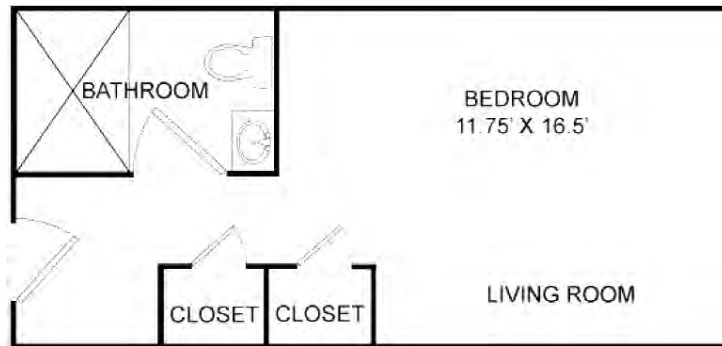
ONE BEDROOM – MODEL A



ONE BED, ONE BATH WITH KITCHENETTE

488 Square Feet

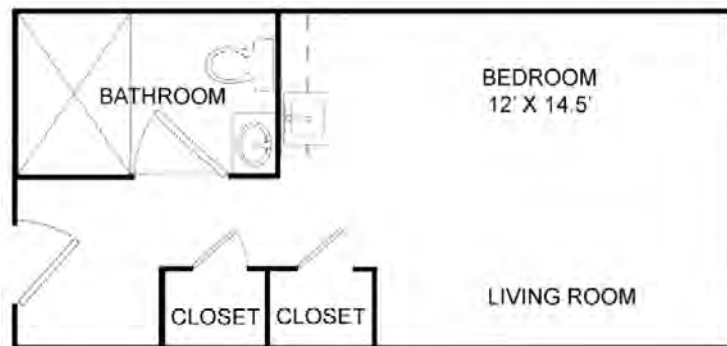
DELUXE STUDIO



ONE BED, ONE BATH

350 Square Feet

DELUXE STUDIO WITH KITCHENETTE



ONE BED, ONE BATH WITH KITCHENETTE

350 Square Feet

SUMMIT PLACE OF SOUTHPARK

FIVE STAR SENIOR LIVING™

2101 Runnymede Lane | Charlotte, NC 28209 | 704-525-5508 | www.SummitPlaceOfSouthPark.com

©2012 Five Star Quality Care, Inc.



Bridge to Rediscovery, the Five Star Senior Living innovative Memory Care program, has been honored with multiple “Best of the Best” awards from the Assisted Living Federation of America. Bridge to Rediscovery was inspired by the Montessori-style approach to education. We celebrate the spirit within each resident through personalized activities that encourage creativity and self-expression. We work with each resident individually, striving for small successes each day that create a sense of accomplishment. Summit Place of SouthPark offers an intimate layout with a common area for the residents to gather. The secure outdoor patio garden allows the residents to enjoy nature. The private dining room allows each resident to receive individual requests and accommodations.

Services and Amenities:

- Three balanced meals a day, plus snacks
- Housekeeping
- Personal laundry and linen services
- Assistance with bathing, dressing and other activities of daily living
- Bridge to Rediscovery Program
- Weekly scheduled outings
- 24-hour, specially trained caring staff
- Scheduled local transportation
- Utilities to include electricity and cable
- Private and companion suites
- Private bathroom
- Individually controlled room temperature
- Welcoming common areas
- Lovely community dining room
- Comfortable living room
- Medication management
- Beauty/barber shop (additional fee)
- Lovely secure outdoor courtyard

SUMMIT PLACE OF SOUTHPARK

FIVE STAR SENIOR LIVING™

2101 Runnymede Lane | Charlotte, NC 28209 | 704-525-5508 | www.SummitPlaceOfSouthPark.com

©2012 Five Star Quality Care, Inc.



MEMORY CARE – BRIDGE TO REDISCOVERY™ RATE SHEET

Model	Sq. Ft.	Monthly Private Rate
Private Room	288 Sq. Ft.	\$3,795
Semi-private Room	350 Sq. Ft.	\$3,250

Beyond our standard services and amenities, we offer an all-inclusive rate covering all levels of care. This includes assistance with medication, bathing, transfers, dressing, personal hygiene, laundry, housekeeping services, reminders, toileting and more.

Levels of Care

Level I	\$600	Level III	\$1,200
Level II	\$1,000	Level IV	\$1,500

Medication Management

Level I	\$250
Level II	\$350

Community Fee: A non-refundable fee of \$2,000 is due upon reserving your apartment of choice.

Respite Stay: \$170 per day

Rates are subject to change.

SUMMIT PLACE OF SOUTHPARK

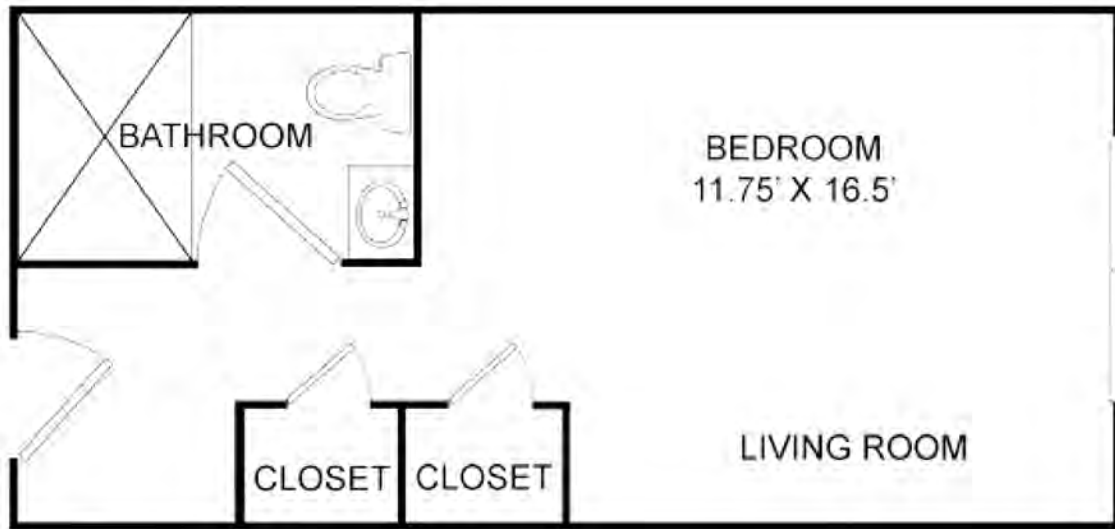
FIVE STAR SENIOR LIVING™

2101 Runnymede Lane | Charlotte, NC 28209 | 704-525-5508 | www.SummitPlaceOfSouthPark.com

©2012 Five Star Quality Care, Inc.

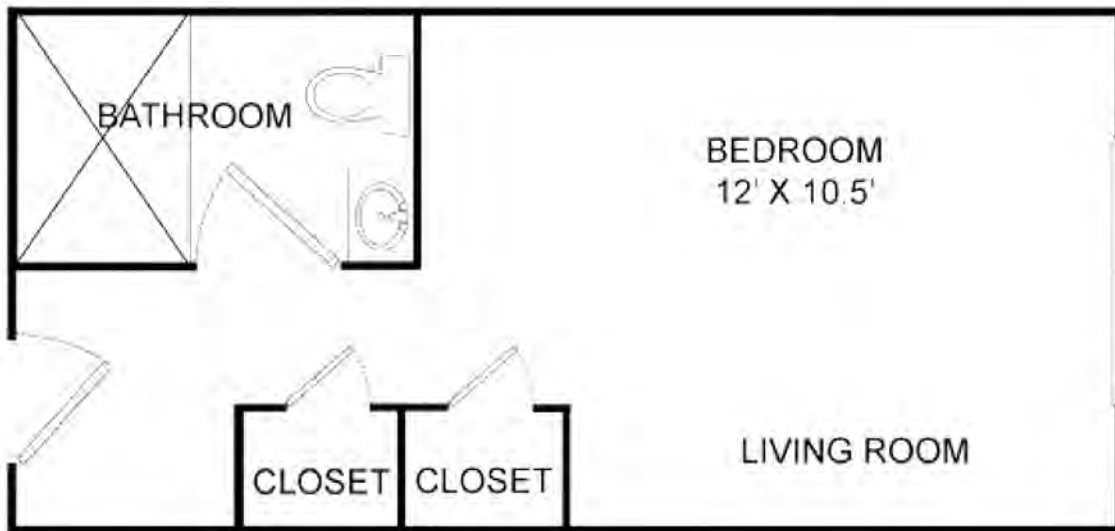


BRIDGE TO REDISCOVERY™ SEMI-PRIVATE



SEMI - PRIVATE
350 Square Feet

BRIDGE TO REDISCOVERY™ PRIVATE



PRIVATE
288 Square Feet

**SUMMIT PLACE
OF SOUTHPARK**

FIVE STAR SENIOR LIVING™

2101 Runnymede Lane | Charlotte, NC 28209 | 704-525-5508 | www.SummitPlaceOfSouthPark.com

©2012 Five Star Quality Care, Inc.

