

ITS THE *people.*

THE PARKER FOSTERS OUR RESIDENT'S SENSE
OF INDEPENDENCE WHILE ENSURING A LOVING
HOME-LIKE ENVIRONMENT.

The Parker community offers a range of services and amenities that meet the ever-changing needs of our residents. Residents receive personalized attention from staff members who have the training – and commitment to quality care – that has made Inspirit Senior Living a nationally honored leader in the field.



Inspirit Senior Living is dedicated to honoring the whole person – body, mind, and Spirit. Our team of skilled and dedicated professionals treats every resident as an individual. We create communities that foster health and well being – and provide experiences that draw out everyone's gifts.

INSPIRITSENIORLIVING.COM/THEPARKER

“THE PARKER
REFLECTS THE DECADES
OF EXPERIENCE THAT
INSPIRIT BRINGS TO THE
VOCATION OF CARING
FOR SENIORS.”

DAVID K. MCHARG
Inspirit President and
Chief Executive Officer

CONTACT *us*

THE PARKER

12 Boyce Avenue
Greenville, SC 29601
Phone: 864-250-1188



THE PARKER

AN **INSPIRIT** SENIOR LIVING COMMUNITY



LIVING
YOUR

best



ITS THE *place.*

AT THE PARKER, WE BELIEVE IN
RECOGNIZING OUR RESIDENT'S CIRCUMSTANCES
AND RESPONDING ACCORDINGLY.
THE PARKER OFFERS A RANGE OF
OPTIONS FOR A SPECTRUM OF NEEDS.

Our rooms are designed to provide comfort, natural light, and spaciousness. We also encourage our residents to add their own taste with artwork, photos, books, and other personal touches.

 ASSISTED LIVING
AVAILABLE NOW

 MEMORY CARE
AVAILABLE NOW



ITS THE *life.*

ALL RESIDENTS OF THE PARKER ENJOY
COMPANIONSHIP, SOCIALIZATION, AND ACTIVITIES
ACROSS THREE PEACEFUL ACRES IN THE HEART OF
GREENVILLE'S HISTORIC DOWNTOWN.

We believe in engaging the whole person, body, mind, and spirit. Health and safety are important, of course – but so are curiosity, companionship, fun, and lifelong learning.

The Parker is only minutes away from some of Greenville's finest traditional Southern cuisines and shops. Residents enjoy the best of Greenville, including visits to local destinations like Falls Park on the Reedy, the Artisphere, Greenville County Museum of Art and the Greenville Zoo.

 [INSPIRITSENIORLIVING.COM/THEPARKER](https://inspiritseniorliving.com/theparker)



THE PARKER

AN INSPIRIT SENIOR LIVING COMMUNITY



ITS THE *service.*

TAKE ADVANTAGE OF OUR CUSTOMIZED
PRICING WITH SERVICES PROVIDED
BY OUR DEDICATED STAFF.

Consisting of 91 units set on over three peaceful private acres, our setting allows residents an opportunity to get to know their neighbor without feeling overwhelmed. If additional support is required beyond assistance with bathing, we offer care packages that can be applied monthly.

RESPITE & SHORT-TERM CARE

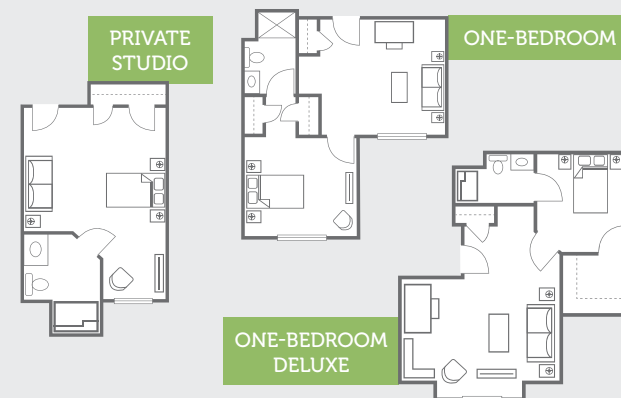
This level of care provides a short term stay for older adults who need care after being released from the hospital or care when the family or another usual caregiver needs a break. Inquire for additional information and rates.

ITS THE *space.*

EXPERIENCE OUR
COMMITMENT TO
FREEDOM OF CHOICE
EVEN BEFORE YOU
JOIN US AS A NEW
RESIDENT!

SAMPLE FEATURES

- Kitchenette (with refrigerator, microwave & sink)
- Individually controlled heat and air conditioning
- Full closets
- Full bath w/handicapped walk-in shower
- Emergency call buttons in units
- Wi-Fi access



Prices Upon Request Not to scale. Sizes and styles of apartments may vary, and availability is not guaranteed until contract is signed.